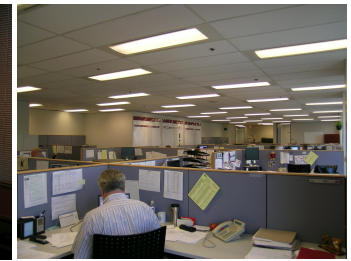
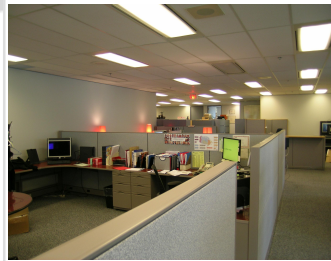


# 20 BAY STREET

FULL FLOOR LONG TERM SUBLET - \$40.13 GROSS



COMMISSION  
\$9 PSF

AS PER THE TERMS OF OUR  
EXCLUSIVE SUBLISTING  
AGREEMENT

NET RENT  
\$19.00 PSF

SPACE AVAILABLE  
20<sup>th</sup> Floor – 20,525 RSF

ADDITIONAL RENT  
(EST.2008)  
\$21.13 PSF

TERM  
January 30<sup>th</sup>, 2020

AVAILABLE  
Q3 2008

## HIGHLIGHTS

- Spectacular views
- Efficient column free floor plan
- Mix of open area and private offices
- Easy access to TTC, GO Trains & Gardiner Expressway
- 36 HVAC zones
- Strong sub-landlord covenant

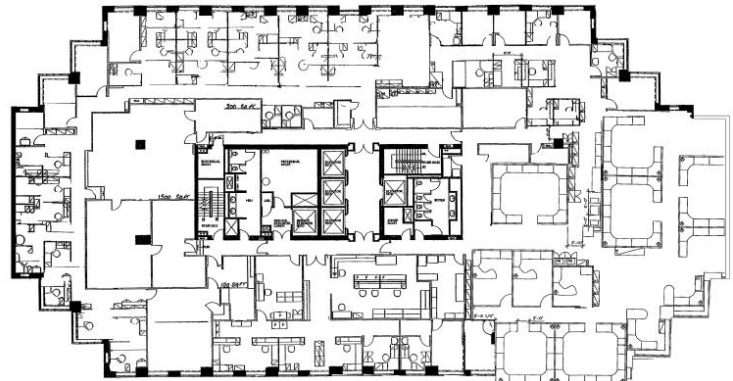
For more information, contact:

**David Bethell\***  
Vice President  
T 416 815 2359  
david.bethell@cbre.com

CB Richard Ellis Limited  
145 King Street West  
Suite 600  
Toronto, ON, M2J 4Z8  
T 416 362 2244  
F 416 362 8085

www.cbre.ca

\*Sales Representative



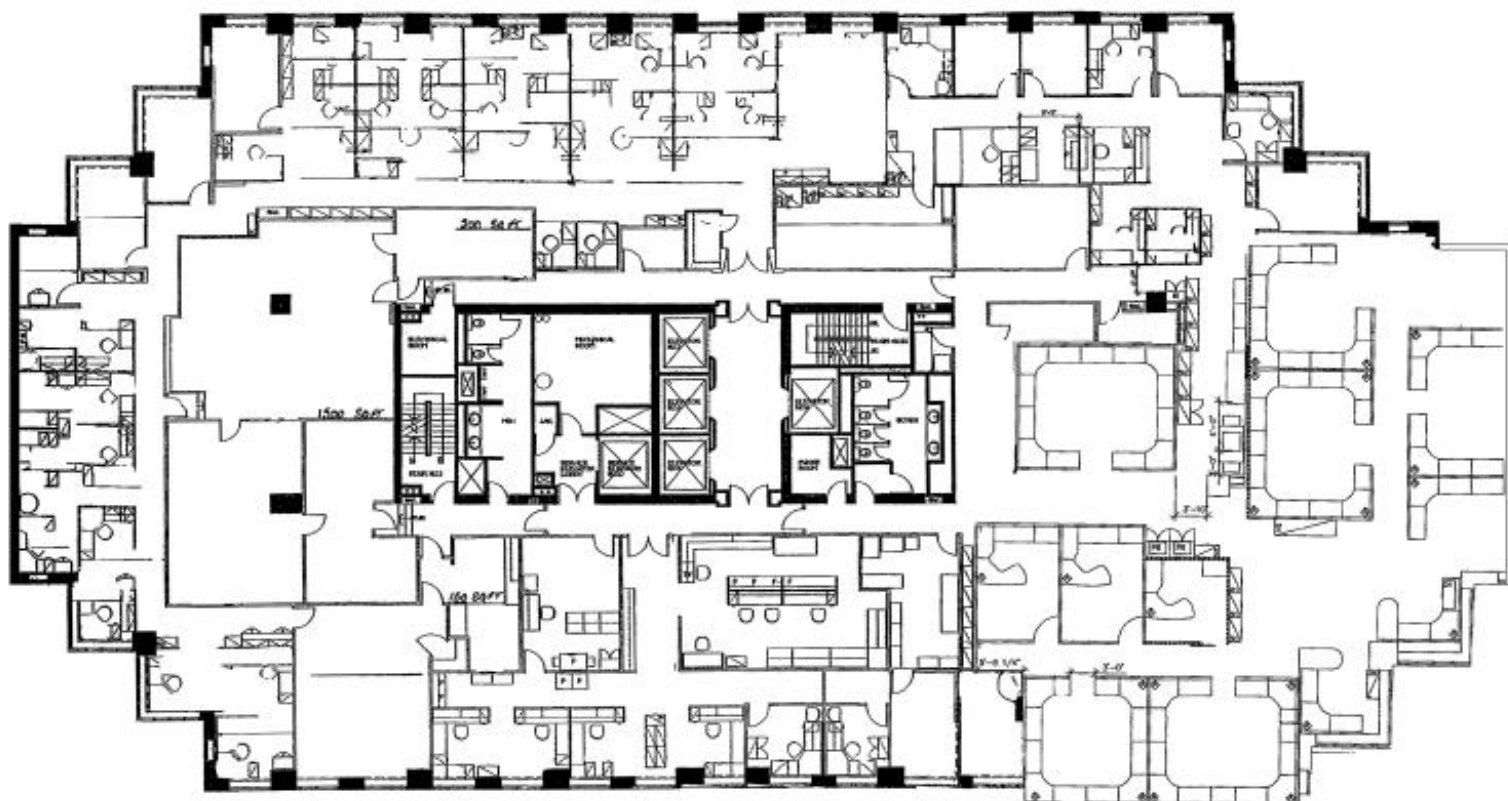
This disclaimer shall apply to CB Richard Ellis Limited, a real estate brokerage, and its Canadian affiliates, CB Richard Ellis Alberta Limited, CB Richard Ellis Manitoba Limited, CB Richard Ellis Québec Limitée and CB Richard Ellis Advisory Services Inc. (collectively "CBRE"). © 2008 CB Richard Ellis Limited. The information set out herein (the "Information") is intended for informational purposes only. CBRE has not verified the Information and does not represent, warrant or guarantee the accuracy, correctness and completeness of the Information. CBRE does not accept or assume any responsibility or liability of any kind in connection with the Information and the recipient's reliance upon the Information. The recipient of the Information should take such steps as the recipient may deem necessary to verify the Information prior to placing any reliance upon the Information. The Information may change and any property described in the Information may be withdrawn from the market at any time without notice or obligation to the recipient from CBRE.

**CBRE**  
CB RICHARD ELLIS

# 20 BAY STREET

FULL FLOOR LONG TERM SUBLET -\$40.13 GROSS

20th FLOOR  
20,525 RSF



For more information, contact:

**David Bethell\***  
**Vice President**  
T 416 815 2359  
david.bethell@cbre.com

CB Richard Ellis Limited  
145 King Street West  
Suite 600  
Toronto, ON, M2J 4Z8  
T 416 362 2244  
F 416 362 8085

[www.cbre.ca](http://www.cbre.ca)

\*Sales Representative

This disclaimer shall apply to CB Richard Ellis Limited, a real estate brokerage, and its Canadian affiliates, CB Richard Ellis Alberta Limited, CB Richard Ellis Manitoba Limited, CB Richard Ellis Québec Limitée and CB Richard Ellis Advisory Services Inc. (collectively "CBRE"). © 2008 CB Richard Ellis Limited. The information set out herein (the "Information") is intended for informational purposes only. CBRE has not verified the Information and does not represent, warrant or guarantee the accuracy, correctness and completeness of the Information. CBRE does not accept or assume any responsibility or liability of any kind in connection with the Information and the recipient's reliance upon the Information. The recipient of the Information should take such steps as the recipient may deem necessary to verify the Information prior to placing any reliance upon the Information. The Information may change and any property described in the Information may be withdrawn from the market at any time without notice or obligation to the recipient from CBRE.

**CBRE**  
CB RICHARD ELLIS