



150 Eglinton Avenue East

Toronto, Ontario

Located on the north side of Eglinton Avenue East near Redpath Avenue

Net Rent: \$12.00 per sq ft*

*Includes \$15.00 per sq ft improvement allowance

Additional Rent: \$17.30 per sq ft (est. 2008)

- Comments:
- Close to Eglinton subway station
 - Health club adjacent
 - Upgraded elevators
 - 24/7 security
 - Underground parking
 - On site property management

Available

Suite 801	3,504	sq ft	Leased
Suite 802	2,836	sq ft	} 4,026 sq ft Contiguous
Suite 805	1,190	sq ft	
Suite 806	1,324	sq ft	Leased
Suite 700	12,435	sq ft	Leased
Suite 603	876	sq ft	Leased
Suite 401	2,497	sq ft	
Suite 404	1,000	sq ft	
Suite 206	2,406	sq ft	Leased
Suite 207	575	sq ft	Leased
Suite 204	1,267	sq ft	Leased
Suite 201	4,206	sq ft	Leased

**For more information contact
The Advisory Services Team:**

John Clare

Real Estate Sales Representative
john.clare@dtzbarnicke.com

Direct Tel: 416 865 4667

Ryan McAskile

Real Estate Sales Representative
ryan.mcaskile@dtzbarnicke.com

Direct Tel: 416 865 5096

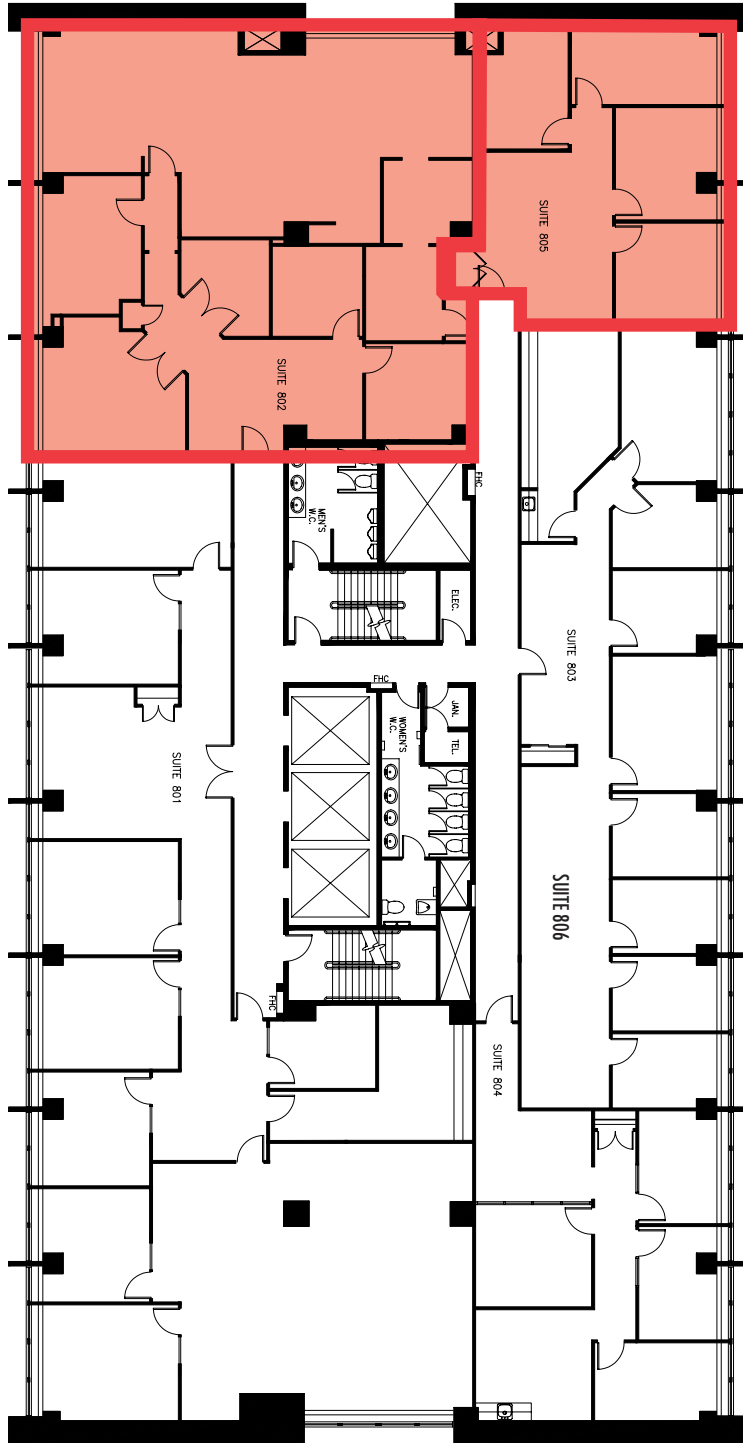
Brendan J Sullivan

Real Estate Sales Representative
brendan.sullivan@dtzbarnicke.com

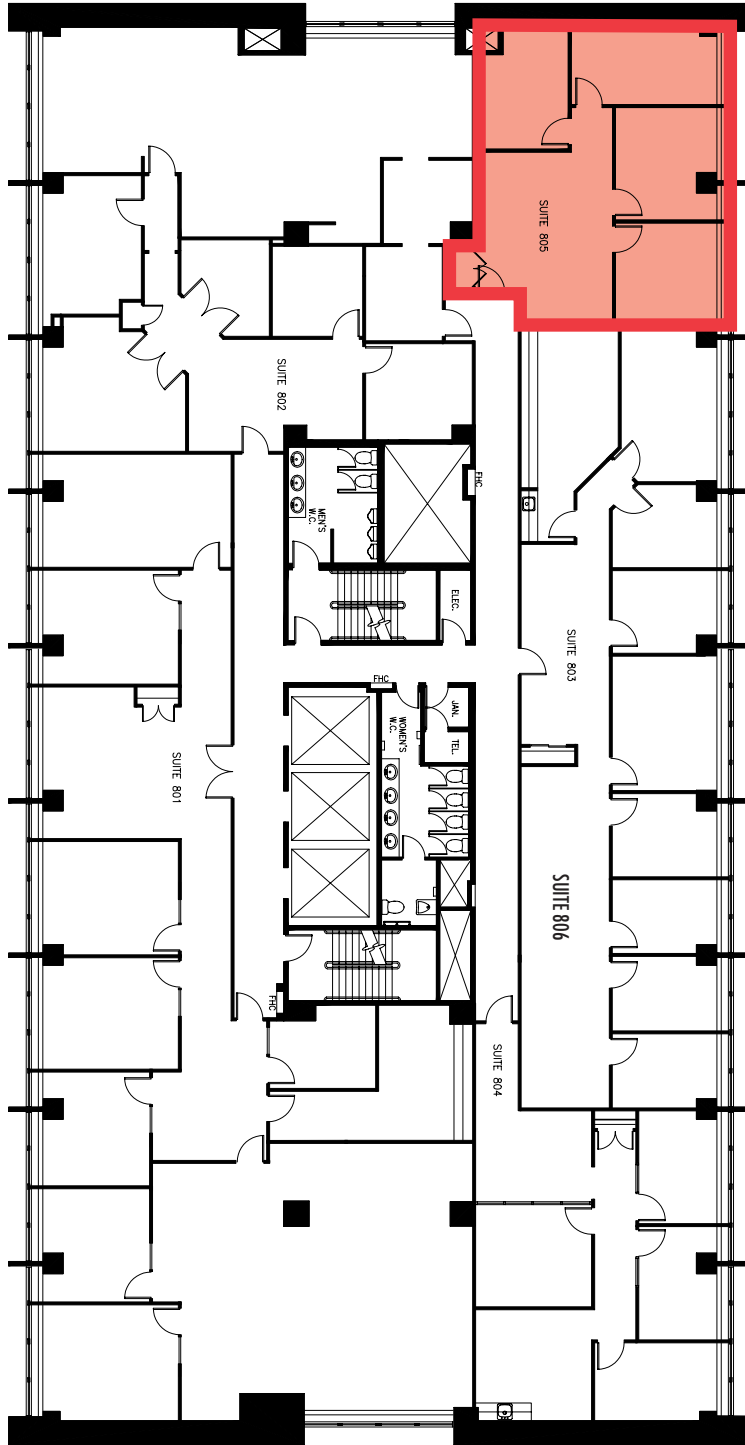
Direct Tel: 416 865 5112

DTZ Barnicke Limited

2500 - 401 Bay Street
Toronto, Ontario, M5H 2Y4



150 Eglinton Avenue East - 8th Floor



150 Eglinton Avenue East - 8th Floor