

260 SPADINA AVENUE , Toronto

\$15.00 GROSS!
Offer valid until Oct. 31/08



Office Space For Lease

Space Available:

Suite 400:	1,395 square feet	LEASED
Suite 401:	1,015 square feet	LEASED
Suite 402:	590 square feet	LEASED
Suite 200:	1,660 square feet	(divisible)

Gross Rental Rate: \$15.00 PSF/YR

Term: Open

Available: Immediately

Comments:

- Built-out office space.
- Landlord to install new carpet and paint.
- Combination of offices and open areas.
- Fully air-conditioned with operable windows.
- Call for rate and term details.

Commission: \$1.00 PSF/YR

For further information please contact:

Ming Zee
Broker of Record
416.703.6621 Ext. 222
ming.zee@metcomrealty.com

Chris Walasek
Sales Representative
416.703.6621 Ext. 224
chris.walasek@metcomrealty.com

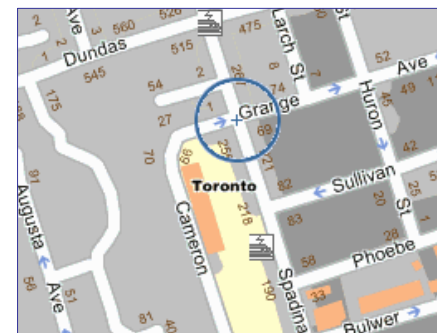


Metropolitan

Commercial Realty Inc.

**Metropolitan Commercial Realty Inc.
Brokerage**

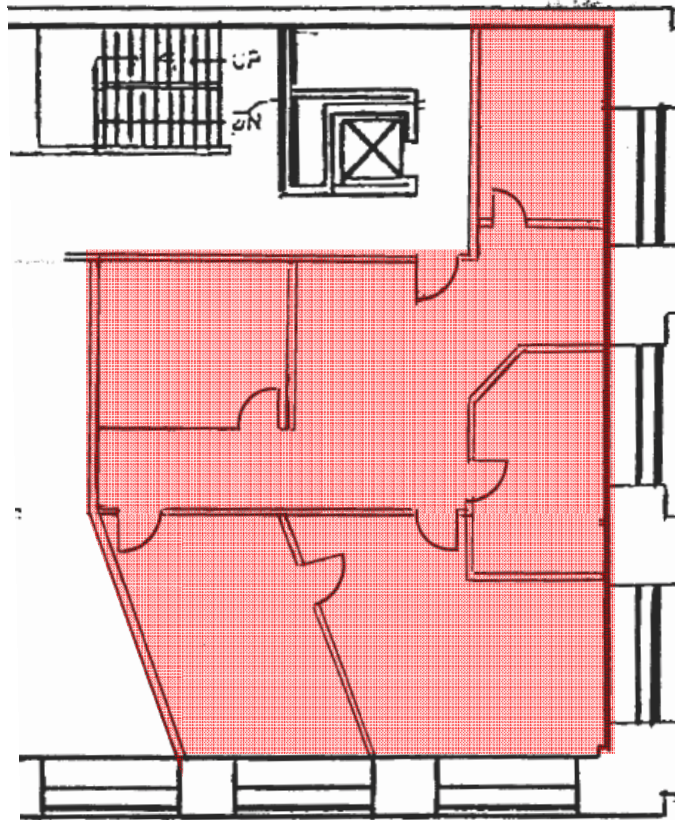
626 King Street West, Suite 302
Toronto, ON, M5R 1M7
Tel. 416.703.6621
Fax. 416.703.6735
metcomrealty.com



The information contained herein has been provided to Metropolitan Commercial Realty Inc. from sources deemed reliable and correct, however we do not warrant its accuracy or assume any responsibility or liability of any kind whatsoever with respect to the accuracy of the information contained herein. All persons are advised to independently verify the information. The information herein is subject to errors, omissions, change of price, rental or other conditions, prior sale or withdrawal at any time without notice.

260 SPADINA AVENUE , Toronto

2nd Floor Plan



Suite 200
1,660 SF
(Divisible)

