

2 BLOOR STREET EAST - FULL 29TH FLOOR

16,532 SF SUBLEASE | TO MAY 30, 2012



Jeff A. Friedman*
Executive Vice President
T 416 815 2363
jeff.friedman@cbre.com

Jennifer M. Ryder*
Associate Vice President
T 416 815 2351
jennifer.ryder@cbre.com

CB Richard Ellis Limited
145 King Street West
Suite 600
Toronto, ON M5H 1J8
T 416 362 2244
F 416 362 8085

www.cbre.ca

*Sales Representative

AVAILABLE

90 Days

AREA AVAILABLE

29th Floor - 16,532 SF

ASKING NET RENT

Call Agent

ADDITIONAL RENT

\$17.59 psf (2008 Estimate)

TERM

To May 30, 2012

COMMISSION

\$1.00 PSF to Selling Agent

HIGHLIGHTS

- Fantastic light and views to the north/south/east west
- Upgraded elevator lobby
- **Reception Area:** polished concrete floors, drywalled ceilings, designated recessed hallogen lighting
- **Client Area:** off reception, drywalled ceilings, recessed hallogen lighting, 2 large boardrooms seats 28 (divisible into two boardrooms of 14 seats each), 1 small meeting room seats 10, 2 touchdown rooms seating 2 people each
- **Office Area:** open areas, team areas, glass walls, carpet tiling
- Employee lounge, bar and table seating, full employee kitchen
- Employee shower/washroom and change area

This disclaimer shall apply to CB Richard Ellis Limited, a real estate brokerage, and its Canadian affiliates, CB Richard Ellis Alberta Limited, CB Richard Ellis Manitoba Limited, CB Richard Ellis Advisory Services Inc., and CB Richard Ellis Québec Limitée (collectively "CBRE").

© 2008 CB Richard Ellis Limited, Real Estate Brokerage. The information set out herein (the "Information") is intended for informational purposes only. CBRE has not verified the Information and does not represent, warrant or guarantee the accuracy, correctness and completeness of the Information. CBRE does not accept or assume any responsibility or liability of any kind in connection with the Information and the recipient's reliance upon the Information. The recipient of the Information should take such steps as the recipient may deem necessary to verify the Information prior to placing any reliance upon the Information. The Information may change and any property described in the Information may be withdrawn from the market at any time without notice or obligation to the recipient from CBRE.

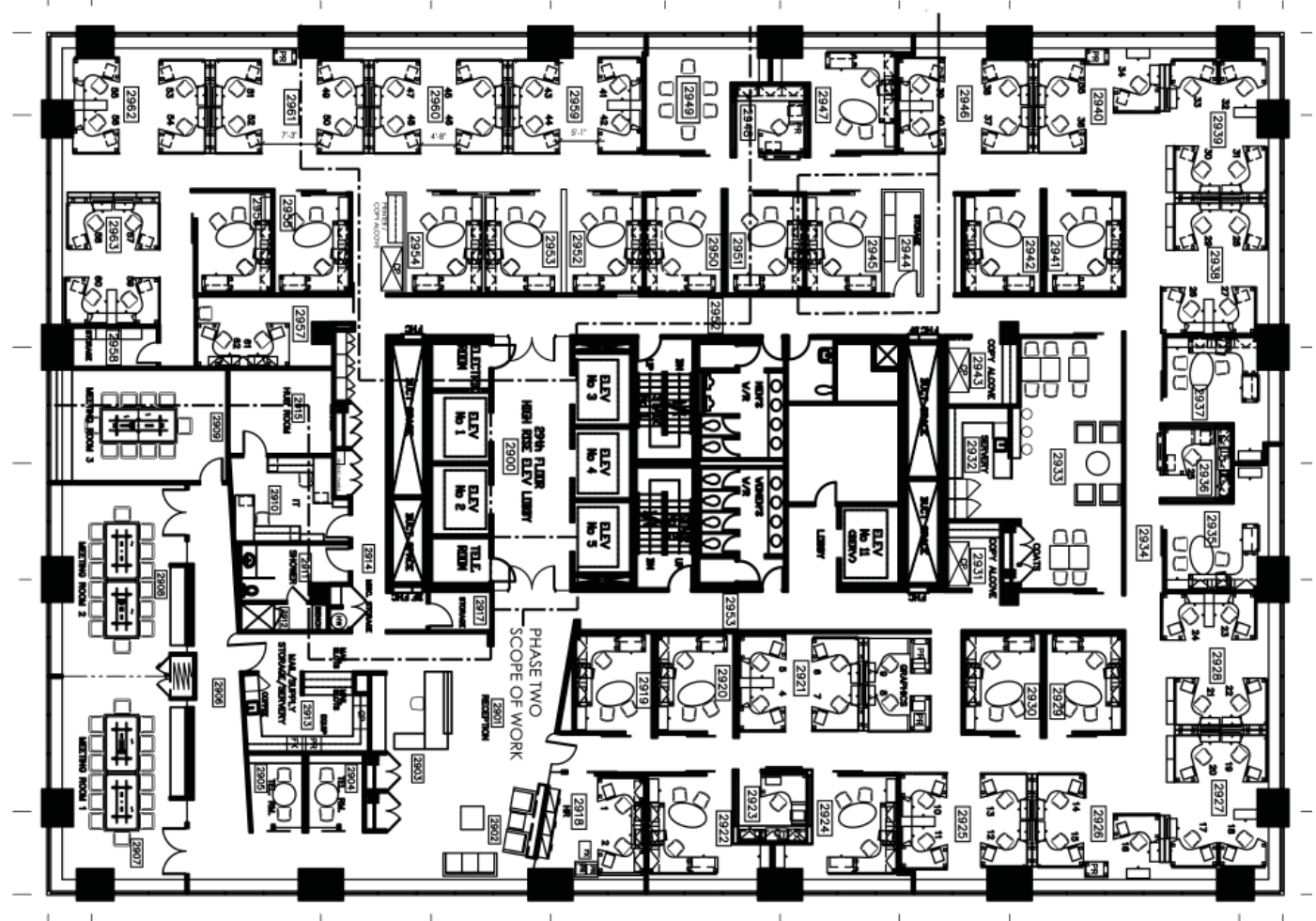
CBRE
CB RICHARD ELLIS

2 BLOOR STREET EAST - FULL 29TH FLOOR

16,532 SF SUBLEASE | TO MAY 30, 2012

AREA AVAILABLE

29th Floor - 16,532 SF



Jeff A. Friedman*
Executive Vice President
T 416 815 2363
jeff.friedman@cbre.com

Jennifer M. Ryder*
Associate Vice President
T 416 815 2351
jennifer.ryder@cbre.com

CB Richard Ellis Limited
145 King Street West
Suite 600
Toronto, ON M5H 1J8
T 416 362 2244
F 416 362 8085

www.cbre.ca

*Sales Representative

This disclaimer shall apply to CB Richard Ellis Limited, a real estate brokerage, and its Canadian affiliates, CB Richard Ellis Alberta Limited, CB Richard Ellis Manitoba Limited, CB Richard Ellis Advisory Services Inc., and CB Richard Ellis Québec Limitée (collectively "CBRE").

© 2008 CB Richard Ellis Limited, Real Estate Brokerage. The information set out herein (the "Information") is intended for informational purposes only. CBRE has not verified the Information and does not represent, warrant or guarantee the accuracy, correctness and completeness of the Information. CBRE does not accept or assume any responsibility or liability of any kind in connection with the Information and the recipient's reliance upon the Information. The recipient of the Information should take such steps as the recipient may deem necessary to verify the Information prior to placing any reliance upon the Information. The Information may change and any property described in the Information may be withdrawn from the market at any time without notice or obligation to the recipient from CBRE.

CBRE
CB RICHARD ELLIS